



IN control

NUMATICS

IN motion

— Valves



- Spool & Sleeve Design
- Direct Solenoid
- Solenoid Air Piloted
- Air Piloted
- Manual Lever
- ISO 5599 & 15407
- Poppet Valves
- Foot Pedal
- Miniature Valves
- Explosion Proof Valves
- Intrinsically Safe Valves
- Circuit Board Technology
- Air Logic Modules

— Field Bus Electronics



- Ethernet
- DeviceNet
- Profibus
- ControlNet
- CANopen
- AS-i
- A/B Remote I/O
- Direct-to-PLC
- Digital / Analog I/O

— Air Prep



- Lockout Valves
- Particulate Filters
- Regulators
- Lubricators
- Coalescing Filters
- Electronic Proportional Regulators
- Solenoid Soft Starts
- Solenoid Quick Exhausts
- Stainless Steel FRLs
- Precision Instrumentation
- Air Dryers

— Specialty Actuators



- Air Bellows
- Feed Escapements
- Swing Clamps
- Power Clamps

— Accessories



- Fittings
- Flow Controls
- Digital Gauges
- Analog Gauges
- Tubing
- Quick Exhausts
- Silencers
- Check Valves
- Shuttle Valves

— Cylinders



- NFPA Standard
- ISO Standard
- Round Line Non-Repairable
- Non-Rotating
- Compact
- Back-to-Back
- Tandem
- Multi-Position
- Rodless
- Rod Locking Units
- Transducers
- Custom Actuators
- Soft Metric Conversions

— Rotary Actuators



- Heavy Duty Rack & Pinion
- Multi-Position
- 90° Crankshaft Rotary
- Rotary Manifold
- Low Profile Rack & Pinion
- Dual Rack & Pinion with NuMate® Mounting

— Slides & Gantries



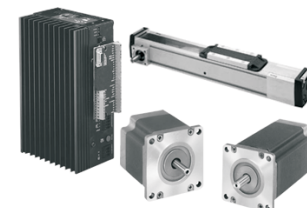
- Heavy & Light Duty Thrusters
- ISO / VDMA Small Bore Slides
- Precision Slide Tables
- Power Blocks
- Compact Guided Slides
- Gantry & Rodless Gantry Slides
- Dual Bore Slides
- ISO Guided Cylinders
- NuMate® Mounting

— Grippers



- Angular Motion
- 180° Radial Motion
- Synchronous Parallel Motion
- Compliant Parallel Motion
- 3 Jaw Concentric Motion
- 6 Jaw O-Ring Gripper
- Miniature Grippers
- Long & Short Stroke Grippers
- NuMate® Mounting

— Electrical Motion



- Ball Screw Gantries
- Ball Screw Drives
- Belt Drive Units
- Stepper Motors & Drives
- Servo Motors & Drives

- Alkon**
- Mobile & Industrial Air Valves
 - DOT & Industrial Fittings
 - Flow Controls
 - Pressure Protection Valves

- ARO**
- Air Valves
 - Cylinders
 - Air Prep Units
 - Air Logic Components
 - Simplair Aluminum Piping

- ARTX**
- Air Curtains
 - Air Guns
 - Vortex Tube Coolers
 - Static Elimination Components

- Aurora Air Products**
- Small Bore Aluminum Cylinders
 - Brass & Stainless Repairable Cylinders
 - Standard & Custom Cylinder Solutions

- Camozzi**
- Air Valves
 - Cylinders
 - Air Prep Units
 - Air Logic Components
 - Push-In Fittings & Accessories

- Canfield Connector**
- DIN / ISO Connectors & Cables
 - Mini & Micro Round Connectors
 - Distributed I/O Boxes

- Clippard**
(NC, SC, GA, TN, MS)
- Miniature Valves & Cylinders
 - Air-Logic Devices
 - Electronic Valves
 - Maximatic Valves & FRLs
 - Tubing, Hose & Fittings
 - Modular Valves

- Deltrol**
- Inline Checks
 - Flow Controls
 - Needle & Quick Exhaust Valves
 - Accessories

- Deublin**
- Precision Rotary Unions for Air / Coolant / Oil / Steam / Vacuum / Water

- Faztek**
- T-Slotted Aluminum Profiles
 - Framing & Guarding Solutions
 - Steel Fencing Solutions

- Freelin-Wade**
- Nylon / Polyurethane / Polyethylene Tubing
 - Coiled Hoses
 - Multi-Color Ribbon Tubing
 - Weld Spatter Resistant Tubing
 - Jacketed Bundles
 - Tube Channels & Clips

- Hydro-Line**
- Aluminum & Steel Cylinders
 - Pneumatic & Hydraulic Cylinders

- Master Pneumatic**
- Serv-Oil Lube Injection Systems
 - Air Prep Units

- Mead Fluid Dynamics**
- Air Valves
 - Cylinders
 - Air Prep Units
 - Air Logic Components
 - Two-Hand Control Valves
 - Air Presses

- Nason**
- Custom Engineered Pressure, Vacuum & Temperature Switches
 - Air Cylinders
 - Standard & Custom Compact Cylinders

- NGT Pneumatic Valves**
- Pilot Operated Checks, Counterbalance & Sequence Modules

- Parker**
- Brass Fittings & Adapters
 - ColorFlow Inline Valves
 - Quick Couplers
 - Braided Stainless Steel & Teflon Hose
 - Rubber Hose Products
 - Pneumatic Tubing

- Rotomation**
- Indexing & Rotary Actuators
 - Pick & Place Actuators

- Schmalz**
- Robotic Vacuum Heads
 - Vacuum Generators
 - Vacuum Pumps
 - Vacuum Cups
 - Magnetic Grippers

- Schunk / Gemotec**
- Pneumatic Grippers
 - Electric Grippers
 - Slides
 - Pick & Place Components
 - Rotary Actuators
 - Robotic Accessories

- SPC**
- Push-In Fittings
 - Rotary Joints
 - Stop Fittings
 - Checks & Flow Controls
 - Ball Valves

- VAC-CUBES**
- Vacuum Generators
 - Vacuum Cups
 - Vacuum Switches

- WIKA**
- Pressure Gauges
 - Differential Gauges
 - Pressure Transmitters
 - Diaphragm Seals